

Looking at Hospital-by-Hospital and Community Level Readmission Rates

Jeff Lemieux, SVP Research

www.ahipresearch.org

National Medicare Readmissions
Summit, June 14, 2011



America's Health Insurance Plans

Site Map | Contact Us | AHIP Site

Search

members provide health
benefits to more than
0 million Americans

AHIP Home

AHIP Center for Policy and Research

Ideas, research and policy solutions from America's Health Insurance Plans



12.11.2009

Working Paper: Comparisons of Utilization in Two Large Multi-State Medicare Advantage HMOs and Medicare Fee-for-Service in the Same Service Areas ([Full Report](#); [Slide](#))

This report is the second in a series of working papers comparing patterns of care among patients with Medicare Advantage (MA) coverage and in Medicare's traditional fee-for-service (FFS) program. The comparisons presented in this report are based on data from two large, multi-state MA HMO plans and Medicare's FFS 5 percent sample claims files in the same operating areas. The utilization measures include hospital admissions and days, re-admissions, "potentially avoidable" admissions, as well as outpatient, emergency room (ER), and office visits.

01.26.2010

[Update A Survey of Health Care Claims Receipt and Processing Times, 2009](#)

AHIP's periodic survey of claims receipt and payment timing, updating the most recent previous report published in May 2006.

Policy News and Resources

- Health spending grew by 4.4%; private premiums grew 3.1%; administrative costs fell to 11.7% of premiums in 2008. [Health Affairs article](#), [CMS data](#). - January 5, 2010
- New [EBRI report](#) on coverage of non-elderly – 45.7 million uninsured. - September 21, 2009
- Employer premiums grew by about 4% in 2009, according to an [updated survey](#) from the Kaiser Family Foundation/HRET. - September 15, 2009
- CMS reports [lowest rate of overall growth in national health spending since 1998](#). - January



Study 6. Readmission Rates in Medicare --FFS vs. MA



MA vs. FFS Readmission Rates (Jencks Method), All Discharges (Medical and Surgical),
Eleven MA Plans (MedAssurant, 2006-2008) and National FFS (Jencks, 2004)

Interval after Discharge	Patients at Risk at Beginning of Period	%	Cumulative Rehospitalizations by End of Period	%	Cum. Death or Disenrollment w/o Rehospitalization by End of Period	%
2004 (FFS/ Jencks)						
0-30 days	2,961,460	100.0%	579,903	19.6%	103,741	3.5%
31-60 days	2,277,816	76.9%	834,369	28.2%	134,697	4.5%
61-90 days	1,992,394	67.3%	1,006,762	34.0%	151,901	5.1%
91-180 days	1,802,797	60.9%	1,325,645	44.8%	177,234	6.0%
2006-2008 (11 MA Plans / MedAssurant)						
0-30 days	231,085	100.0%	33,641	14.6%	3,393	1.5%
31-60 days	194,051	84.0%	48,931	21.2%	5,288	2.3%
61-90 days	176,657	76.4%	59,488	25.7%	6,560	2.8%
91-180 days	164,789	71.3%	79,890	34.6%	8,951	3.9%

Source: Jencks et. al. (NEJM April 2009), MedAssurant, Inc./AHIP.

Notes: Not risk-adjusted.

Study 6. FFS vs. MA (All Enrollees), with Risk Adjustment (DRG Based)



Risk-adjusted and Unadjusted Thirty-Day Readmission Rates (Anderson Method),
MA vs. Medicare FFS, 2006-2008

	FFS	MA	Percentage Difference (MA vs. FFS)
Readmissions per Admission			
Unadjusted, All Enrollees*	18.4%	14.4%	-22%
Adjustment for DRG Distribution (version 24 DRGs)	--	+11.0%	
Risk-adjusted	18.4%	16.0%	-13%
Adjustment for DRG Distribution (version 26 DRGs)	--	+2.7%	
Risk-adjusted	18.4%	14.8%	-20%

Source: AHIP/MedAssurant based on data from Gerard Anderson/Johns Hopkins University for FFS; MedAssurant, Inc. for MA.

*Enrollees under age 65 with end stage renal disease (ESRD) were excluded from the FFS data.

Study 5. Percentage Difference in Risk-Adjusted Readmission Rates (Various Definitions), Medicare Advantage vs. FFS



	30 Days, Any DRG (Revisit Data)*	Same Quarter, Any DRG (Original)*	Same Quarter, Any DRG (Revisit Data)
MA Rate vs. FFS Rate (Per Hospitalization, with DRG-Based Risk Adjustment**)			
California (2008)	-18%	-15%	-15%
California (2006)	-18%	-13%	-12%
California (2007)	-17%	-14%	-14%
Nevada (2006)	-17%	-15%	-14%
Nevada (2007)	-18%	-15%	-15%
Washington (2006)	-17%	-17%	-17%
Texas (2007)	-17%	-14%	-14%
North Carolina (2007)	-12%	-15%	-14%

Source: AHIP, based on analysis of state hospital discharge public use datasets with encrypted “person” identifiers, provided by AHRQ’s HCUP project (CA, NV, WA, NC,) and by states directly (TX). <http://www.ahipresearch.org/pdfs/9State-Readmits.pdf>

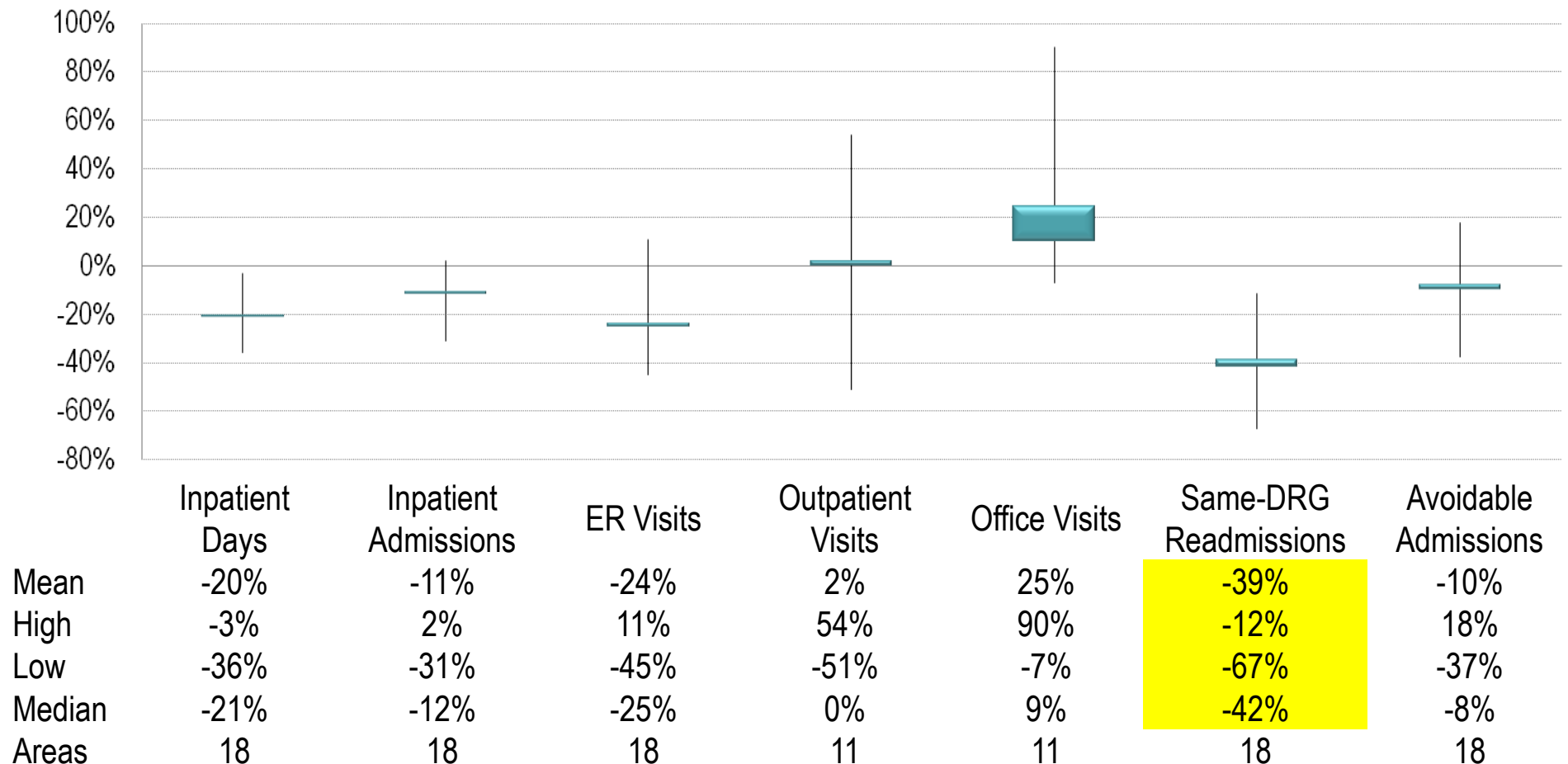
Note: Excludes patients with an admission listing an out-of-state address.

*Excludes transfer cases.

**Risk measure based on an index of the likelihood of admissions for DRGs that are associated with higher or lower than average rates of readmissions (any DRG), using the 2006-2007 FFS 5 percent sample file as a benchmark (DRG version 24) and the 2008 FFS 5 percent sample file (DRG version 25).

Study 3: Added Two Large Multi-State For-Profit MA HMO Plans (Total Plan-Areas = 18)

10-Company Results: Percentage Difference in Utilization Rates, MA Rate vs. FFS Rate (per risk score value)



Study 5: Percentage Difference in 30-Day Readmission Rates (Various Denominators), Medicare Advantage vs. FFS



	Per Hospitalization*	Per Patient with At Least One Admission**	Per Estimated Enrollee**
MA Rate vs. FFS Rate (Per Hospitalization, with DRG-Based Risk Adjustment**)			
California (2006)	-18%	-26%	-40%
California (2007)	-18%	-26%	-38%
California (2008)	-17%	-27%	-39%
Nevada (2006)	-17%	-23%	-29%
Nevada (2007)	-18%	-22%	-28%
Washington (2006)	-17%	-18%	-43%
Texas (2007)	-17%	-17%	-22%
North Carolina (2007)	-12%	-12%	-26%

Source: AHIP, based on analysis of state hospital discharge public use datasets with encrypted "person" identifiers, provided by AHRQ's HCUP project (CA, NV, WA, NC) and by states directly (TX). <http://www.ahipresearch.org/pdfs/9State-Readmits.pdf>

Note: Excludes patients with an admission listing an out-of-state address.

*DRG-Based risk adjustment. Risk measure based on an index of the likelihood of admissions for DRGs that are associated with higher or lower than average rates of readmissions (any DRG), using the 2006-2007 FFS 5 percent sample file as a benchmark (DRG version 24) and the 2008 FFS 5 percent sample file (DRG version 25).

**CMS-Style risk adjustment. Risk scores for FFS and MA enrollees based on age/sex and HCC relative cost values used in Medicare risk adjustment for beneficiaries living in the community, but do not include disease interactive factors, or factors related to disability or institutional status. Person-based risk scores are based on inpatient hospital diagnoses for all admissions, but do not include diagnosis information from other health care services, such as hospital outpatient or physician office visits.

Cost Conference, March 2011



 America's Health Insurance Plans	HEALTH CARE COST SUMMIT Slowing the Growth of Health Costs— How to Bend the Cost Curve
March 9, 2011 Washington, D.C.	



HealthAffairs



Conference conclusions

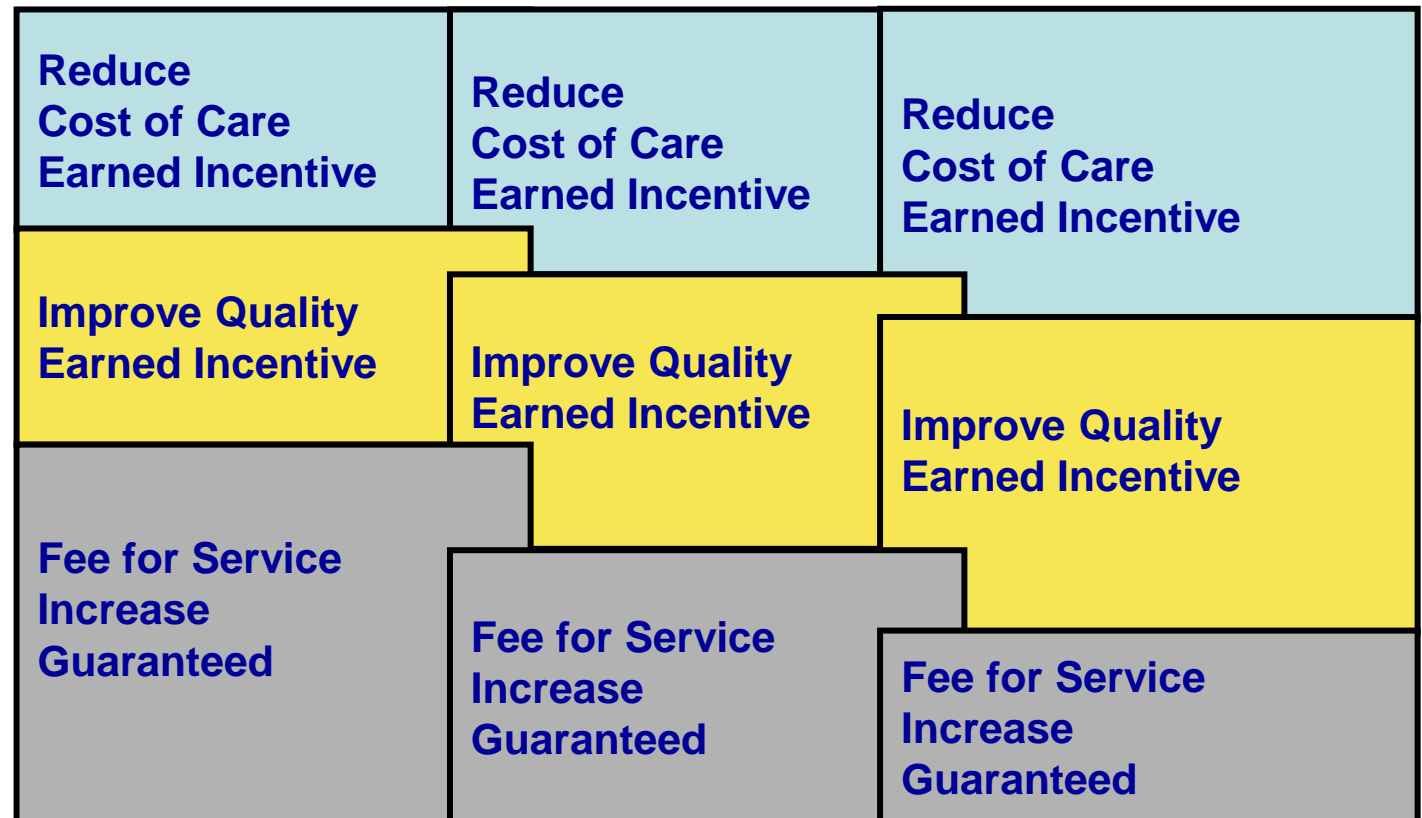
- 1) the need to focus on improved care for patients with chronic illnesses, whose health care needs drive most health spending
- 2) the potential for sophisticated contracts between health plans and health care systems to improve care for patients with chronic diseases while also slowing the growth of costs
- 3) the importance of systematically addressing costs throughout the health care system and across the country, not simply focusing on individual payers, providers, or government programs

Historical

Shared incentives for value creation



Year 1



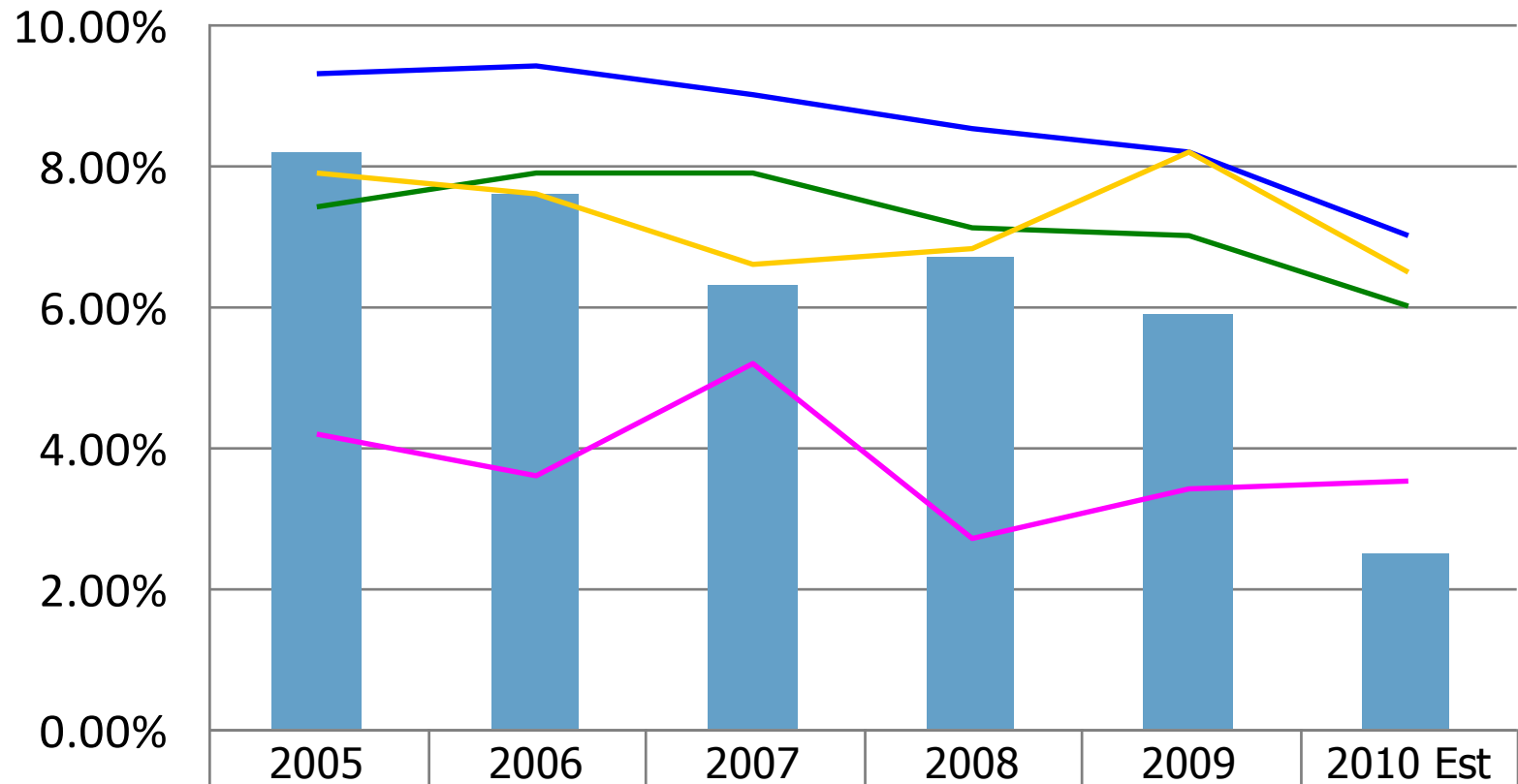
Year 1

Year 2

Year 3

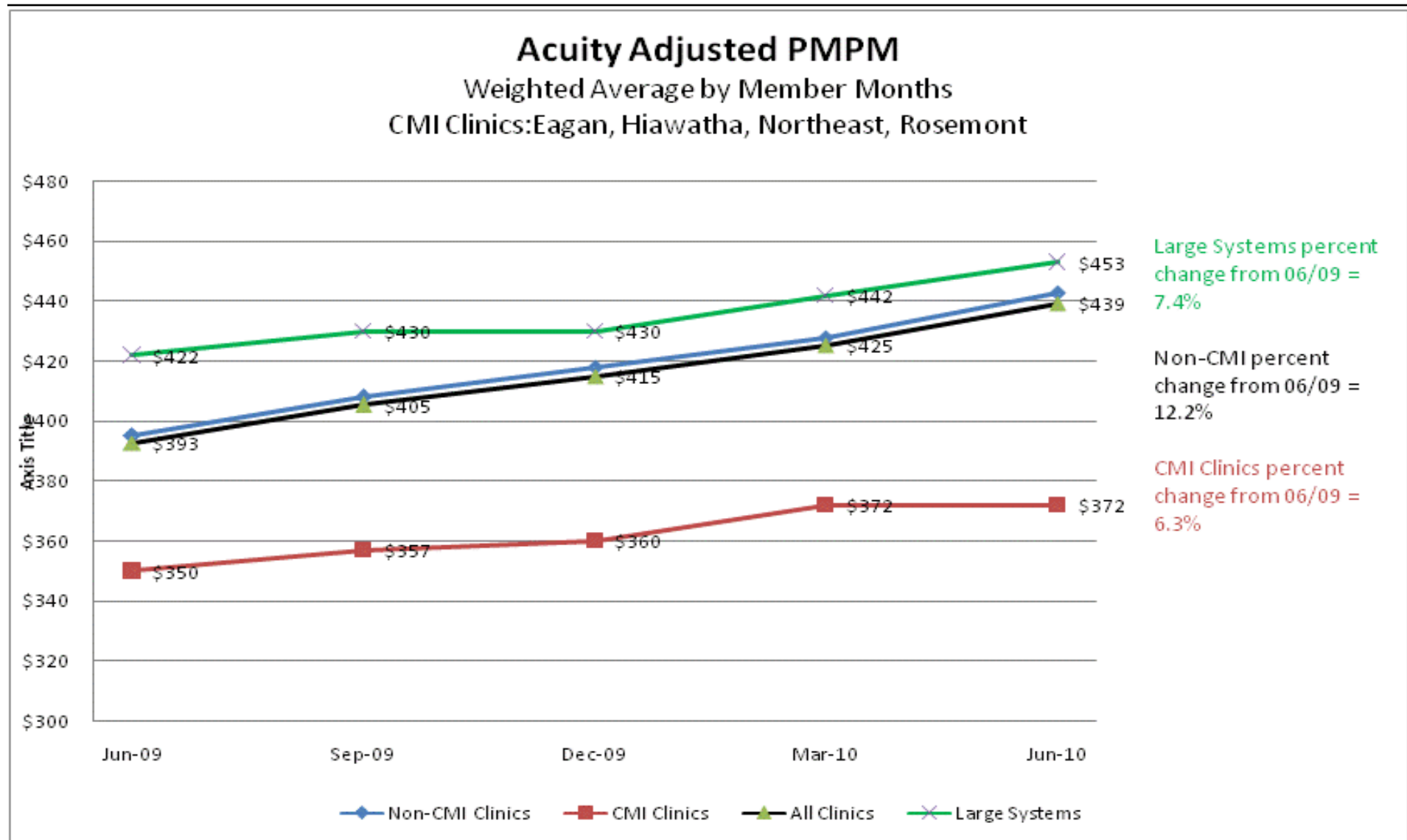
**Incentive payment based on measurable improvements in
cost, quality, outcomes**

Year over Year % Change



	2005	2006	2007	2008	2009	2010 Est
BCBSMN Medical Cost Trend	8.20%	7.60%	6.30%	6.70%	5.90%	2.50%
Industry Medical Cost Trend	7.40%	7.90%	7.90%	7.10%	7.00%	6.00%
Milliman HCI	9.30%	9.40%	9.00%	8.50%	8.20%	7.00%
Medical Cost Inflation	4.20%	3.60%	5.20%	2.70%	3.40%	3.50%
Blue Trend Survey Median	7.90%	7.60%	6.60%	6.80%	8.20%	6.50%

Fairview Health Services -- Demonstrating Outcomes: Bending the Cost Curve



Medicare FFS 2008 100%

Inpatient Dataset



Same Quarter, Same Hospital or Hospital Region, All Cause* Readmissions
(No Jencks Possible/Likely Planned Readmission DRGs)

	Admits	Readmits	Rate
Same Hospital Referral Region (HRR)	8,060,588	1,382,827	17.2%
Same Hospital Service Area (HSA)	8,060,588	1,288,462	16.0%
Same Hospital	8,060,588	1,204,847	14.9%

Same-Hospital Readmission Rates in Medicare Fee-for-Service, 2008, Hospitals with the Highest Numbers of Medicare FFS Admissions



Hospital	Case Mix Index	CMI wtd avg=1	Total Admits	All-Cause Readmits	Readmit Rate	W/ CMI Adjust
US Total		1.00	8,060,588	1,204,847	14.9%	
1	1.61	1.04	32,490	5,799	17.8%	17.1%
2	1.89	1.22	22,068	3,269	14.8%	12.1%
3	1.72	1.11	20,057	3,346	16.7%	15.0%
4	1.61	1.04	19,616	3,060	15.6%	15.0%
5	1.65	1.07	19,211	2,690	14.0%	13.1%
6	1.82	1.17	17,238	2,903	16.8%	14.3%
7	1.60	1.04	17,083	2,600	15.2%	14.7%
8	1.61	1.04	16,273	2,595	15.9%	15.3%
9	1.55	1.00	16,252	2,096	12.9%	12.9%
10	1.70	1.10	15,755	2,131	13.5%	12.3%

Source: Medicare FFS 100% Limited Data Sets; Case Mix Index (CMI) information is from CMS.

Note: Case-mix adjusted, all-cause same-quarter readmissions per hospitalization (excluding admissions for rehabilitation and admissions that may be associated with planned readmissions).

Same-Hospital Readmission Rates in Medicare Fee-for-Service, 2008, Hospitals with the Highest Numbers of Medicare FFS Admissions



Hospital	Case Mix Index	CMI wtd avg=1	Total Admits	All-Cause Readmits	Readmit Rate	W/ CMI Adjust
US Total		1.00	8,060,588	1,204,847	14.9%	
11	1.29	0.84	15,226	2,509	16.5%	19.7%
12	1.63	1.06	14,919	2,571	17.2%	16.3%
13	1.81	1.17	14,862	2,582	17.4%	14.8%
14	1.53	0.99	14,739	3,016	20.5%	20.7%
15	1.83	1.19	14,669	2,066	14.1%	11.9%
16	1.66	1.07	14,569	2,048	14.1%	13.1%
17	1.79	1.16	14,508	1,808	12.5%	10.7%
18	1.73	1.12	14,273	2,017	14.1%	12.6%
19	1.84	1.19	14,185	2,238	15.8%	13.3%
20	2.02	1.31	14,169	1,832	12.9%	9.9%

Source: Medicare FFS 100% Limited Data Sets; Case Mix Index (CMI) information is from CMS.

Note: Case-mix adjusted, all-cause same-quarter readmissions per hospitalization (excluding admissions for rehabilitation and admissions that may be associated with planned readmissions).

Same-Hospital Readmission Rates in Medicare Fee-for-Service, 2008, Hospitals with the Highest Numbers of Medicare FFS Admissions



Hospital	Case Mix Index	CMI wtd avg=1	Total Admits	All-Cause Readmits	Readmit Rate	W/ CMI Adjust
US Total		1.00	8,060,588	1,204,847	14.9%	
17	1.79	1.16	14,508	1,808	12.5%	10.7%
9	1.55	1.00	16,252	2,096	12.9%	12.9%
20	2.02	1.31	14,169	1,832	12.9%	9.9%
10	1.70	1.10	15,755	2,131	13.5%	12.3%
5	1.65	1.07	19,211	2,690	14.0%	13.1%
16	1.66	1.07	14,569	2,048	14.1%	13.1%
15	1.83	1.19	14,669	2,066	14.1%	11.9%
18	1.73	1.12	14,273	2,017	14.1%	12.6%
2	1.89	1.22	22,068	3,269	14.8%	12.1%
7	1.60	1.04	17,083	2,600	15.2%	14.7%

Source: Medicare FFS 100% Limited Data Sets; Case Mix Index (CMI) information is from CMS.

Note: Case-mix adjusted, all-cause same-quarter readmissions per hospitalization (excluding admissions for rehabilitation and admissions that may be associated with planned readmissions).

Same-Hospital Readmission Rates in Medicare Fee-for-Service, 2008, Hospitals with the Highest Numbers of Medicare FFS Admissions



Hospital	Case Mix Index	CMI wtd avg=1	Total Admits	All-Cause Readmits	Readmit Rate	W/ CMI Adjust
US Total		1.00	8,060,588	1,204,847	14.9%	
4	1.61	1.04	19,616	3,060	15.6%	15.0%
19	1.84	1.19	14,185	2,238	15.8%	13.3%
8	1.61	1.04	16,273	2,595	15.9%	15.3%
11	1.29	0.84	15,226	2,509	16.5%	19.7%
3	1.72	1.11	20,057	3,346	16.7%	15.0%
6	1.82	1.17	17,238	2,903	16.8%	14.3%
12	1.63	1.06	14,919	2,571	17.2%	16.3%
13	1.81	1.17	14,862	2,582	17.4%	14.8%
1	1.61	1.04	32,490	5,799	17.8%	17.1%
14	1.53	0.99	14,739	3,016	20.5%	20.7%

Source: Medicare FFS 100% Limited Data Sets; Case Mix Index (CMI) information is from CMS.

Note: Case-mix adjusted, all-cause same-quarter readmissions per hospitalization (excluding admissions for rehabilitation and admissions that may be associated with planned readmissions).

Same-Hospital Readmission Rates in Medicare Fee-for-Service, 2008, Hospitals with 4,000+ Admissions Ranked by CMI-Adjusted Readmission Rate



Hospital	Case Mix Index	CMI wtd avg=1	Total Admits	All-Cause Readmits	Readmit Rate	W/ CMI Adjust
US Total		1.00	8,060,588	1,204,847	14.9%	
-	1.65	1.07	5,505	498	9.0%	8.5%
-	2.12	1.37	5,237	484	9.2%	6.7%
-	1.78	1.15	4,173	422	10.1%	8.8%
-	1.97	1.28	7,529	769	10.2%	8.0%
-	1.85	1.20	4,830	496	10.3%	8.6%
-	1.66	1.07	4,178	430	10.3%	9.6%
-	1.78	1.15	4,422	457	10.3%	9.0%
-	1.43	0.92	5,178	540	10.4%	11.3%
-	1.52	0.98	4,943	527	10.7%	10.8%
-	1.59	1.03	4,889	528	10.8%	10.5%

Source: Medicare FFS 100% Limited Data Sets; Case Mix Index (CMI) information is from CMS.

Note: Case-mix adjusted, all-cause same-quarter readmissions per hospitalization (excluding admissions for rehabilitation and admissions that may be associated with planned readmissions).

Same-Hospital Readmission Rates in Medicare Fee-for-Service, 2008, Hospitals with 8,000+ Admissions Ranked by CMI-Adjusted Readmission Rate



Hospital	Case Mix Index	CMI wtd avg=1	Total Admits	All-Cause Readmits	Readmit Rate	W/ CMI Adjust
US Total		1.00	8,060,588	1,204,847	14.9%	
-	1.60	1.03	9,594	1,093	11.4%	11.0%
-	1.86	1.21	9,895	1,129	11.4%	9.5%
-	2.01	1.30	9,846	1,134	11.5%	8.9%
-	2.27	1.47	8,178	946	11.6%	7.9%
-	1.90	1.23	8,448	988	11.7%	9.5%
-	1.76	1.14	9,250	1,098	11.9%	10.4%
-	1.80	1.16	10,374	1,241	12.0%	10.3%
-	1.66	1.08	8,445	1,016	12.0%	11.2%
-	1.72	1.11	11,644	1,408	12.1%	10.9%
-	1.86	1.20	11,712	1,432	12.2%	10.2%

Source: Medicare FFS 100% Limited Data Sets; Case Mix Index (CMI) information is from CMS.

Note: Case-mix adjusted, all-cause same-quarter readmissions per hospitalization (excluding admissions for rehabilitation and admissions that may be associated with planned readmissions).

DRAFT - Medicare FFS 100%



Data, by HSA (and HRR)

IP_100_2008 -- FFS Only; SGMT_NUM = 1; No Transfers; No Jencks; Select Hospitals -- Same Qtr, Any DRG, Same Hospital Service Area (HSA) Readmits, Total same-hospital=14.9%; Total same-HSA=16.0%

HSA Number	HSA City	HSA State	Provider	State	Same Qtr, Any DRG, Same HSA Readmits by Provider	Total Admits by Provider	Total Re-admits by HSA	Total Admits by HSA	Readmit Rate by HSA	Readmit Rate by Provider
01001	Alabaster	AL	010016	AL	365	2,810	365	2,810	13.0%	13.0%
01004	Anniston	AL	010038	AL	467	2,197	1,280	7,406	21.3%	17.3%
		AL	010078	AL	813	5,209			15.6%	
01007	Athens	AL	010079	AL	301	1,990	301	1,990	15.1%	15.1%
01010	Bessemer	AL	010114	AL	366	2,591	366	2,591	14.1%	14.1%
01011	Birmingham	AL	010011	AL	636	4,176	4,784	33,113	15.2%	14.4%
		AL	010033	AL	1,512	9,104			16.6%	
		AL	010056	AL	929	6,291			14.8%	
		AL	010103	AL	542	3,970			13.7%	
		AL	010104	AL	480	4,091			11.7%	
		AL	010139	AL	685	5,481			12.5%	
01012	Boaz	AL	010005	AL	385	2,651	385	2,651	14.5%	14.5%
01022	Cullman	AL	010035	AL	528	3,241	528	3,241	16.3%	16.3%
01024	Decatur	AL	010085	AL	555	3,711	555	3,711	15.0%	15.0%

IP_100_2008 -- FFS Only; SGMT_NUM = 1;
No Transfers; No Jencks; Select Hospitals --
Same Qtr, Any DRG, Same HRR Readmits



HRR Number	HRR City	State	Readmits by HRR	Total Admits by HRR	Readmission Rate by HRR
	TOTAL US		1,382,827	8,060,588	17.2%
422	Provo	UT	3,028	286	9.4%
370	Rapid City	SD	4,173	422	10.1%
341	Bend	OR	3,090	328	10.6%
240	Marquette	MI	3,270	349	10.7%
421	Ogden	UT	3,521	393	11.2%
152	Idaho Falls	ID	2,706	308	11.4%
452	Neenah	WI	1,832	209	11.4%
002	Dothan	AL	6,493	752	11.6%
010	Anchorage	AK	3,872	451	11.6%
315	Hickory	NC	6,880	804	11.7%
089	Santa Rosa	CA	4,638	547	11.8%
448	La Crosse	WI	5,384	640	11.9%
281	Lebanon	NH	6,338	754	11.9%
276	Missoula	MT	5,615	668	11.9%
150	Honolulu	HI	7,182	868	12.1%
345	Salem	OR	2,984	362	12.1%
105	Grand Junction	CO	2,804	343	12.2%
073	Redding	CA	7,173	880	12.3%
440	Spokane	WA	26,658	3,277	12.3%
151	Boise	ID	11,355	1,404	12.4%
261	Oxford	MS	3,632	453	12.5%
016	Fort Smith	AR	8,508	1,067	12.5%
321	Bismarck	ND	5,887	742	12.6%
275	Great Falls	MT	4,246	536	12.6%
423	Salt Lake City	UT	19,910	2,515	12.6%

IP_100_2008 -- FFS Only; SGMT_NUM = 1; No Transfers; No Jencks; Select Hospitals -- Same Qtr, Any DRG, Same HRR Readmits



HRR Number	HRR City	State	Readmits by HRR	Total Admits by HRR	Readmission Rate by HRR
	TOTAL US		1,382,827	8,060,588	17.2%
223	Baltimore	MD	134,849	31,648	23.5%
297	Bronx	NY	29,811	6,431	21.6%
234	Detroit	MI	77,772	16,486	21.2%
155	Blue Island	IL	55,567	11,695	21.0%
156	Chicago	IL	86,898	18,271	21.0%
127	Miami	FL	75,203	15,406	20.5%
164	Joliet	IL	26,304	5,373	20.4%
328	Cleveland	OH	92,390	18,856	20.4%
289	Newark	NJ	48,796	9,847	20.2%
226	Takoma Park	MD	24,754	4,944	20.0%
233	Dearborn	MI	27,580	5,448	19.8%
227	Boston	MA	187,626	36,895	19.7%
273	St. Louis	MO	127,641	24,832	19.5%
303	Manhattan	NY	140,597	27,232	19.4%
357	Pittsburgh	PA	84,766	16,407	19.4%
356	Philadelphia	PA	136,879	26,426	19.3%
158	Elgin	IL	22,133	4,221	19.1%
396	Harlingen	TX	14,502	2,764	19.1%
364	Providence	RI	32,857	6,243	19.0%
232	Ann Arbor	MI	44,566	8,450	19.0%
111	New Haven	CT	51,601	9,780	19.0%
329	Columbus	OH	77,873	14,730	18.9%
235	Flint	MI	25,426	4,784	18.8%
186	Munster	IN	19,299	3,631	18.8%
331	Elyria	OH	10,456	1,966	18.8%

IP_100_2008 -- FFS Only; SGMT_NUM = 1; No Transfers; No Jencks; Select Hospitals -- Same Qtr, Any DRG, Same HSA Readmits



HSA Number	HSA City	State	Total Admits	Readmits by HSA	Readmission Rate by HSA
	TOTAL US		8,060,588	1,288,462	16.0%
46025	Provo	UT	3,028	286	9.4%
03008	Flagstaff	AZ	2,823	276	9.8%
10033	Englewood	FL	2,135	210	9.8%
13020	Lewiston	ID	1,641	164	10.0%
43036	Rapid City	SD	4,173	422	10.1%
38012	Corvallis	OR	1,831	187	10.2%
28042	Kearney	NE	2,771	284	10.2%
38016	Eugene	OR	3,714	384	10.3%
10016	Cape Coral	FL	5,178	540	10.4%
10111	South Miami	FL	2,747	287	10.4%
27034	Missoula	MT	2,822	296	10.5%
38006	Bend	OR	3,090	328	10.6%
45096	Fredericksburg	TX	1,515	161	10.6%
23072	Marquette	MI	3,270	349	10.7%
52015	Brookfield	WI	2,215	237	10.7%
01026	Dothan	AL	4,889	528	10.8%
37080	Shawnee	OK	1,989	215	10.8%
03015	Lake Havasu City	AZ	2,496	271	10.9%
50023	Federal Way	WA	2,185	238	10.9%
38027	Klamath Falls	OR	1,922	211	11.0%
13038	Twin Falls	ID	2,704	297	11.0%
10032	Dunedin	FL	2,710	298	11.0%
05066	Eureka	CA	2,304	256	11.1%
46020	Ogden	UT	3,521	393	11.2%

IP_100_2008 -- FFS Only; SGMT_NUM = 1; No Transfers; No Jencks; Select Hospitals -- Same Qtr, Any DRG, Same HSA Readmits



HSA Number	HSA City	State	Total Admits	Readmits by HSA	Readmission Rate by HSA
	TOTAL US		8,060,588	1,288,462	16.0%
25018	Cleveland	MS	2,120	495	23.3%
37028	Durant	OK	3,420	788	23.0%
21002	Baltimore	MD	93,417	21,469	23.0%
36037	East Liverpool	OH	2,397	536	22.4%
33012	Bronx	NY	26,659	5,922	22.2%
31038	Orange	NJ	3,154	697	22.1%
39087	Natrona Heights	PA	2,883	632	21.9%
44020	Dyersburg	TN	3,012	654	21.7%
14020	Centralia	IL	3,320	717	21.6%
05151	National City	CA	3,869	835	21.6%
31020	Hoboken	NJ	2,367	508	21.5%
18080	South Williamson	KY	1,237	265	21.4%
18034	Hazard	KY	4,018	860	21.4%
14023	Chicago	IL	86,898	18,271	21.0%
14068	Joliet	IL	15,478	3,232	20.9%
23026	Detroit	MI	27,600	5,692	20.6%
31063	Trenton	NJ	13,679	2,820	20.6%
21022	Leonardtown	MD	3,619	741	20.5%
33014	Brooklyn	NY	48,638	9,952	20.5%
39032	Darby	PA	4,785	979	20.5%
18031	Harlan	KY	1,410	288	20.4%
05166	Oroville	CA	3,534	720	20.4%
14024	Chicago Heights	IL	9,502	1,928	20.3%
11046	Douglas	GA	2,098	425	20.3%

Identifying HACs from Discharge Datasets, NY 2008



		All Never Events and Hospital- Acquired Infections	Falls and Trauma	Methicillin- Resistant <i>Staph</i> <i>aureus</i> (MRSA)	Catheter- Associated Urinary Tract Infection	<i>Clostridium</i> <i>difficile</i> infections	Vascular Catheter- Associated Infection
Total Incidents Identified		14,203	1,254	1,029	594	8,398	1,692
		Per 1,000 Admissions					
Statewide Average		5.59	0.49	0.40	0.23	3.31	0.67
Median Among Hospitals in Sample		4.52	0.49	0.32	0.05	2.33	0.27
Lowest Rate per 1,000 Admissions	Overall	0.00	0.00	0.00	0.00	0.00	0.00
	> 1,000 Admissions	0.00	0.00	0.00	0.00	0.00	0.00
	> 3,000 Admissions	0.00	0.00	0.00	0.00	0.00	0.00
	> 5,500 Admissions	0.43	0.00	0.00	0.00	0.10	0.00
	> 8,000 Admissions	0.43	0.00	0.00	0.00	0.10	0.00
	> 12,000 Admissions	0.43	0.00	0.00	0.00	0.12	0.00
	> 16,000 Admissions	0.43	0.00	0.00	0.00	0.12	0.00
	> 22,000 Admissions	1.18	0.10	0.05	0.00	0.54	0.04
Highest Rate per 1,000 Admissions	Overall	30.09	5.71	7.87	4.44	11.40	25.46
	> 1,000 Admissions	18.12	2.04	2.31	4.44	11.40	5.25
	> 3,000 Admissions	18.12	2.04	2.31	4.44	11.40	5.25
	> 5,500 Admissions	18.12	2.04	2.31	4.44	11.40	5.25
	> 8,000 Admissions	18.12	1.95	2.31	4.44	11.40	5.25
	> 12,000 Admissions	18.12	1.41	2.31	4.44	11.40	5.25
	> 16,000 Admissions	18.12	1.41	2.31	4.44	11.40	5.25
	> 22,000 Admissions	11.50	1.17	1.53	0.66	6.28	3.77